

# prod'innov



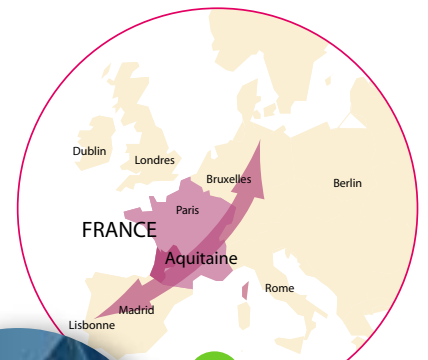
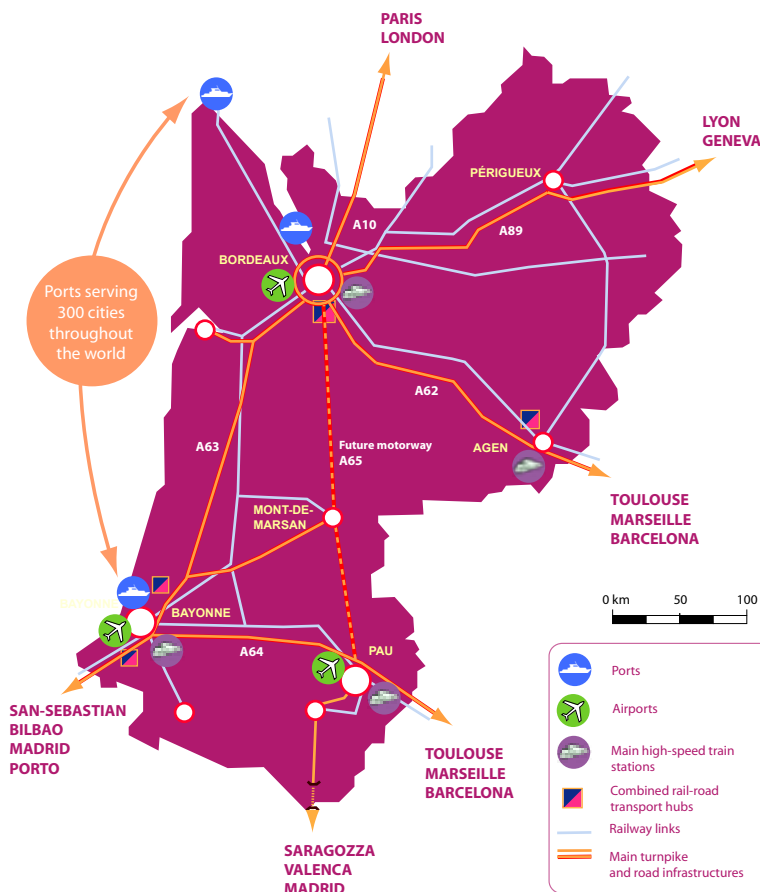
**Locate**  
**Develop**  
**Invest**

Prod'innov in Aquitaine offers all of the ingredients necessary for the success of your corporate **location** and **development** project

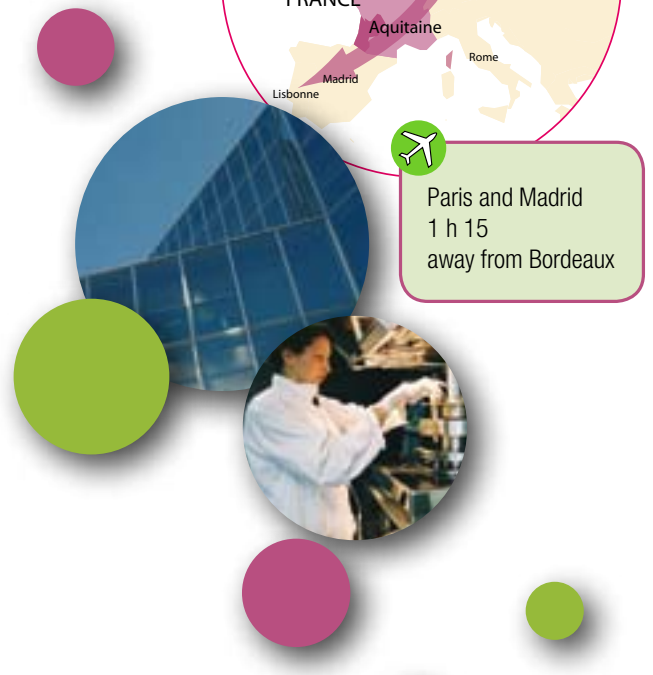
## A complete "nutrition-health" sector

- Agricultural **raw materials**: Aquitaine is one leading French agricultural region for maize, organic soybeans, aquaculture, poultry, vineyards, and numerous fruits and vegetables
- **Suppliers** of ingredients developed through plant extraction and biotechnologies
- **Services**: analyses, marketing, packaging, clinical testing, pilot batches, refrigerated transport, distributors

## A strategic position along Europe's north-south logistics corridor, bordering Spain



Paris and Madrid  
1 h 15  
away from Bordeaux



## Attractive corporate location conditions

- **Real estate costs are 30% lower** than the average for the Paris region. Cost of living 20% below that of Paris.
- **Specialized business zones**
  - **Agribusiness**  
The Agropole in Agen (Lot-et-Garonne) provides premises for one hundred companies. Shared services include 30% of the European agribusiness quality criteria, and the zone benefits from an STEF-TFE logistics hub, serving all of Europe. [www.agropole.com](http://www.agropole.com)
  - **Biotech / Health**  
In 2010, the planned Bioparc in Pessac (Gironde) will welcome companies in the health sector near the university hospital and campus via the Bordeaux freeway bypass. [www.prodinnov.com](http://www.prodinnov.com)
  - **Chemicals**  
The Chemparc site at Lacq (Pyrénées-Atlantiques) near Pau has Seveso 2 classification and concentrates 4,000 jobs. [www.chemparc.com](http://www.chemparc.com)



### ● **Employment zone of 1.4 million working residents**

- Growth outlook is twice the French average
- Among the top 3 French regions for GDP growth
- Specific inter-school programs in nutrition-health



## If you have an investment project

In partnership with our regional experts' network, we provide you with comprehensive guidance and assistance **free of charge** and in **strict confidentiality** to accomplish your project.

- Identify your future **partners** (R&D, clients, local suppliers)
- Locate **sites** suited to your needs, organize visits
- Get help with **formalities**, maximize **subsidies**



**Agnès Champalaune**, food-science, agronomics engineer  
Project leader for business development / Inward investment in Aquitaine  
Ph. +33 5 57 57 84 95, cell: +33 6 23 50 85 85  
[agnes.champalaune@2adi.aquitaine.fr](mailto:agnes.champalaune@2adi.aquitaine.fr) - [www.prodinnov.fr](http://www.prodinnov.fr)

